

RADIO ENVIRONMENT MAP ENABLED SITUATION-AWARE COGNITIVE RADIO LEARNING ALGORITHMS

Youping Zhao, Joseph Gaeddert, Kyung K. Bae, and Jeffery H. Reed
Mobile and Portable Radio Research Group (MPRG), Wireless@Virginia Tech
Bradley Department of Electrical and Computer Engineering, Virginia Tech
432 Durham Hall, MC 0350, Blacksburg, VA 24061

ABSTRACT

This paper presents an innovative and generic approach to developing cognitive radios (CR) based on the radio environment map (REM). REM is envisioned as an integrated database consisting of multi-domain information, which supports global cross-layer optimization by enabling CR to “look” through various layers. The REM, as a vehicle of network support to CR, can be exploited by the cognitive radio engine (CE) for various cognitive functionalities such as situation awareness, reasoning, learning, planning and decision support. This paper presents the system flow and framework of REM-enabled situation-aware learning algorithms. Simulations demonstrate the effectiveness and efficiency of REM-enabled CR learning algorithms. Furthermore, by sharing information about the radio environment through REM dissemination, the hidden node problem can be mitigated and the secondary users can co-exist with primary users (PUs) with minimal harmful interference. Link level and network level simulations are conducted with MATLAB and NS-2, respectively.

1. INTRODUCTION

In recent years, cognitive radios have been introduced as a new paradigm for enabling much higher spectrum utilization, providing more reliable radio services, reducing harmful interference, and facilitating the interoperability of different wireless networks [1][2]. CRs can be autonomously aware of situations and the radio environment, learn from experience, and adapt by responding to dynamic operational conditions. However, there are many research issues yet to be addressed, such as how a CR can obtain comprehensive situational and environmental awareness. To provide CR networks with up-to-date global radio environment information, we propose the radio environment map as an abstraction from real-world radio scenarios and as a vehicle of network support [2]. Ideally, REM can offer multi-domain environmental information, such as geographical features, available services, spectral regulations, locations and activities of radios, relevant policies, and experiences. To keep REM information current, updates to the REM database should be

made with observations from distributed CR nodes and then disseminated throughout the CR network [2][3]. The REM can also be viewed as an extension to the available resource map (ARM), which has been proposed as a real-time map of all radio activities in the network for cognitive radio applications in unlicensed wide area networks (UWANs) [4][5].

Several specific algorithms have been proposed for CRs in recent literature. For example, artificial neural networks and genetic algorithms have been investigated through CR test-beds under certain controlled radio environment [6][7]. In [8], Clancy *et al.* formalized the applications of machine-learning algorithms to CR and developed a framework. However, to the best of the authors’ knowledge, little literature exists which addresses the efficiency of learning algorithms for CEs with appropriate performance metrics. Our recent research shows that a robust CE relies on leveraging various artificial intelligence techniques rather than a single one [9]. However, how to leverage various learning algorithms under different radio scenarios is an open research issue. This is the general motivation of this work. This paper explores the potential of REM information on cognitive radio situations and proposes a framework of REM-enabled situation-aware learning algorithms. The ultimate goal for the CE envisioned in this work is to quickly determine when to apply which specific learning algorithm with the help of REM-enabled case-based reasoning/learning, and make prompt responses to changing environment with short adaptation time.

This paper has three main contributions. First, we propose a novel and generic top-down approach for CRs to obtain situation awareness by exploiting the REM. Secondly, we propose a general framework for CR learning algorithms that incorporates both high- and low-level learning loops. Third, by conducting link level and network level simulations, we evaluate the efficiency and effectiveness of the proposed REM-enabled learning algorithms in terms of adaptation time, average received signal to interference and noise ratio (SINR), average throughput and average packet delay of incumbent primary users (PUs).

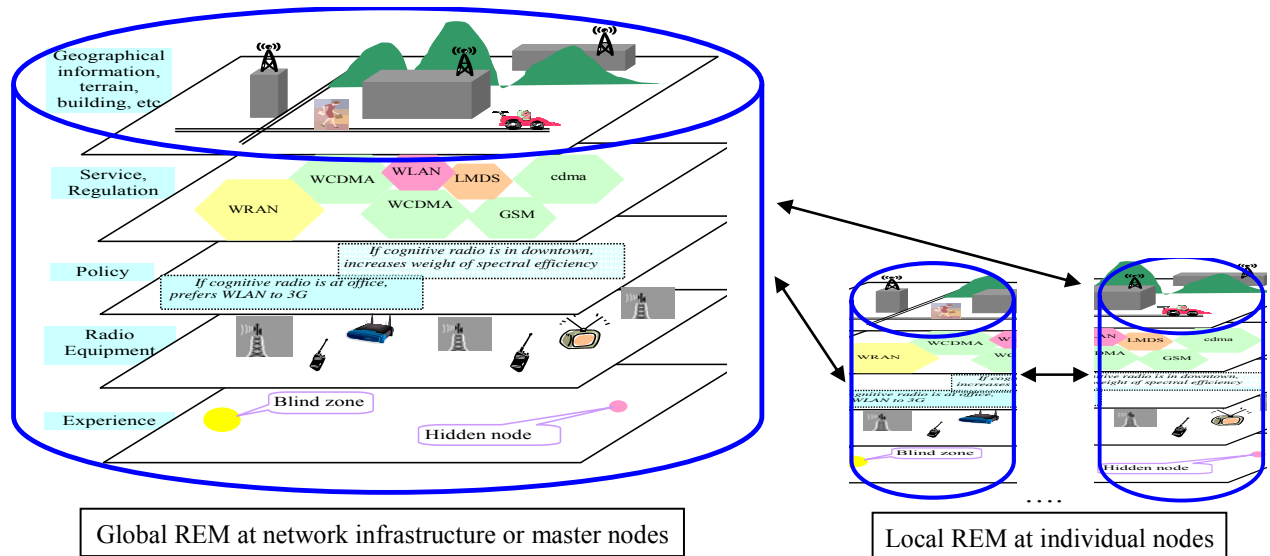


Figure 1: Global and local REMs - Integrated Databases for Cognitive Radios

The remainder of this paper is organized as follows: Section II presents more detailed explanations on REM-enabled situation awareness. Section III explains the framework and system flow of REM-enabled efficient cognitive learning algorithms and discusses how REM can help CRs make adaptations more efficiently. Section IV presents the simulation results and demonstrates the efficiency and effectiveness of REM-enabled PU protection and cooperative learning, where CR node can learn from other nodes thereby mitigating interference to PUs.

2. REM-ENABLED SITUATION AWARENESS

The most important features of CRs are the capabilities of obtaining situation awareness, learning from experience and adapting to new scenarios, which differentiate CRs from software-defined radios (SDR) and adaptive radios. This section presents more structural details about REM and explains how CRs can exploit REM for situation awareness and efficient learning from a system point of view.

Cognitive behavior, usually taking place in a rich and complex environment, is goal-oriented and a function of the dynamic environment [10]. Therefore, obtaining comprehensive radio environment information is imperative for CRs. The idea behind REM is digitizing and indexing radio environment information. The more clearly the radio environment is characterized and modeled, the better the CR can learn from experience and environment. Figure 1 shows how the REM, as an integrated database, can provide CRs with multi-domain radio environment information, such as geographical features, available services, spectral regulations, locations and activities of radios, relevant policies, and experiences. In addition, the REM can incorporate the policy layer, application layer, optimization

layer, topology, and network layer information, all of which are important to CR networks. Table 1 illustrates the information domains of an example REM and the index to each REM information element. Enabled by advanced database technologies such as web-based database, REM can be accessed in a centralized or distributed way.

Rather than observing the radio environment with blind and wide spectrum sensing, REM-enabled CR may choose to have a scalable view of radio environment with an application-specific observation range. For example, for indoor wireless access, REM information pertaining to only a few rooms could suffice; whereas for outdoor wireless ad-hoc networks, a large-scale REM could be appropriate, providing more global information. To obtain situation awareness, not every CR needs to conduct sophisticated spectrum sensing so long as it maintains or has access to an up-to-date REM through the network support [2][3].

From a system standpoint, the REM enables a top-down approach for a CR to obtain situation awareness in a very efficient way. For example, the REM can inform the CR what kind of radio networks could be in service at a certain location. Based upon the radio interface specifications stored in the REM database, the CR will know the possible frequency bands and modulation types used by PUs. The CR can even obtain some prior knowledge of PUs by analyzing the historical REM data and learning from experience. Therefore, CR can conduct PU detection with focused attention instead of spending excessive processing time performing complex spectrum sensing and signal classification algorithms. This top-down approach for PU detection and/or classification is more effective and efficient. Furthermore, REM has the potential to support global cross-layer optimization by enabling CRs to “look” through various layers: from policy layer,

Table 1: Digitizing and Indexing Radio Environment Information

Domain and index range	Syntax and index
Application type => 700-799	Voice (701), packet data(702), video conference (703), etc
Optimization layer => 600-699	Minimize interference to PU (600), maximize SU throughput (601), etc
Topology and network type => 500-599	Infrastructure-based network {WCDMA(500), cdma2000 (501), WRAN (502), etc}; ad hoc network (510), mesh network (520), etc
MAC and duplex => 400-499	TDMA (400), FDMA (401), CDMA (402), OFDMA (403); FDD (410), TDD (411), etc
Geography and mobility information => 300-399	Indoor {home (300), office (301), airport (302), factory (303), etc}; outdoor {urban (310), suburban (311), open rural (312), highway (313), etc}; in-vehicle {train (320), bus (321), car (322), plane (323), etc}, etc
Modulation type => 200-299	AM (200); FM (210); M-PSK {BPSK (220), QPSK(221), etc}; M-QAM {16-QAM (230), 64 QAM (231), etc}; etc
Radio device capability => 100-199	Channel coding {Convolutional coding (100), Turbo Coding (110), etc}; maximum RF transmit power (120), sensitivity (130), operational bands (140); antenna type (150), etc
Experience => 0-99	Blind zone (10), hot spot (20), hidden node (30), etc

application layer, optimization layer, topology layer, down to the network, MAC, and PHY layers [11][12].

3. SYSTEM FLOW AND FRAMEWORK OF REM-ENABLED LEARNING ALGORITHMS

This section discusses the system flow and framework of the proposed REM-enabled situation-aware learning algorithms, as shown in Figure 2.

Triggered by certain service request from CR devices (such as a video conference call), the CR first obtains situation awareness by querying the REM and determines the optimal spectrum and network to use. For example, REM information might show that the CR is in the service area of a wireless regional area network (WRAN) and that TV channel 9 is available. The CR then senses TV channel 9 and adjacent channels to verify the information provided by the REM database. If it is confirmed that TV Channel 9 is suitable to use, the WRAN system then determines the utility functions that fit the current situation of the CR user: service type and QoS requirements, e.g., data rate, latency, bit error rate, power consumption, etc. Such a radio scenario can be defined by {703, 600, 502, 403, 411, 312, 231, etc} according to Table 1. It should be noted that different

services might require disparate performance metrics and utility functions for optimization. Based on previous experiences, the WRAN CE may leverage various machine learning algorithms (such as artificial neural networks and genetic algorithms) or heuristic algorithms to fine-tune its parameter set, optimizing its performance according to link feedback information. With the help of REM, prompt adaptation and/or scheduling can be made based on spectrum usage models and predictions.

Figure 2 indicates that the proposed framework for CR learning algorithms includes both a high-level and a low-level learning loop. The high-level loop is based on case-based learning/reasoning which leverages various learning algorithms and selects the most appropriate learning method for the current radio scenario. The low-level loop optimizes the corresponding parameters used in the specific learning algorithm. Under a given radio scenario, a CR first chooses the most effective high-level learning method to use (e.g., cooperative learning or heuristic learning) with case-based reasoning, then it starts the low-level learning. For each new case, e.g., a new radio scenario that has not been previously experienced, the CR may take a “trial and error” approach and memorize its experience into case memory and REM (if the experience is associated with certain location) for future reference. In this way, the CR will be able to learn from both its own and global network experience.

With case-based learning, a CR can accumulate its learning experience continuously to increase its knowledge. The adaptation time shortens as the CR gains experiences through various radio scenarios. Furthermore, the CR will adopt a better starting point and further reduce the solution space over which it must search. Case-based learning performs very well in dynamically changing environments and is well suited for implementation with the REM [9]. By indexing REM information, radio scenarios can be characterized clearly and retrieved efficiently for case-based learning, not unlike indexing a dictionary. Further details regarding REM-enabled case-based learning will be explained in another paper [13].

Similar to the proverb, “history is the world’s finest teacher,” historical system-level REM information is valuable to CRs. For example, prior knowledge about the radio environment, such as spatiotemporal statistics of the PUs, can help a CR to improve the PU detection rate by adjusting the detection threshold [14]. Furthermore, a CR can derive the periodicity or model of PUs traffic based on REM information and specifications of wireless network standards, and then opportunistically access the spectrum with fewer collisions by exploiting the inherent periodicity of widely employed TDMA or CSMA systems [15]. Some “slow” learning algorithms (such as data mining) can be employed offline as long-term learning.

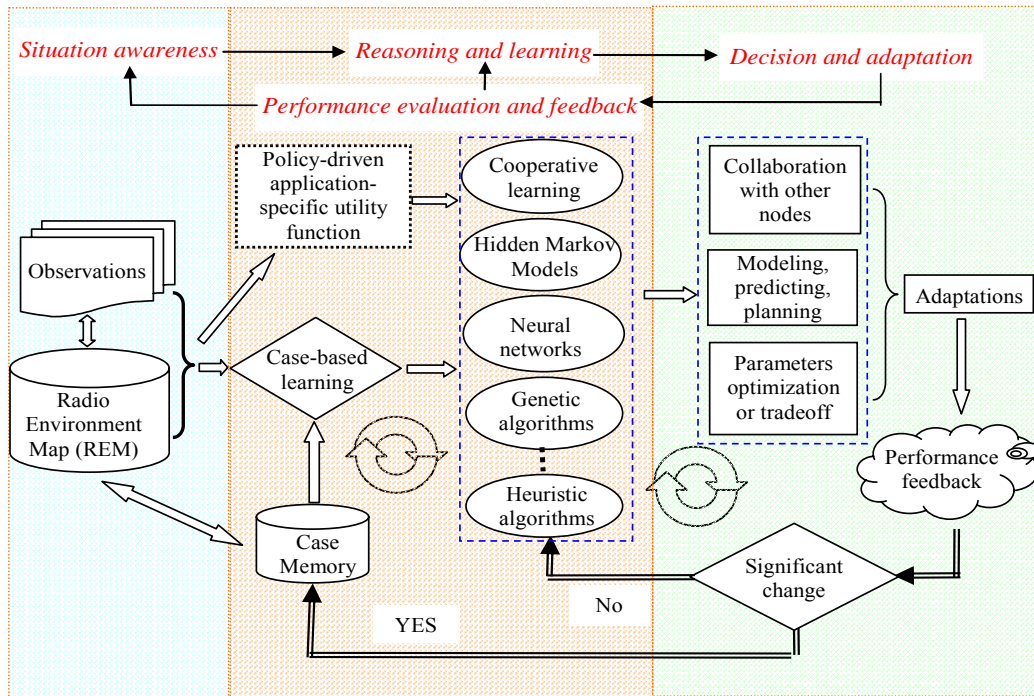


Figure 2: System flow and frame work of REM-enabled situation-aware learning algorithms

4. SIMULATION AND ANALYSIS

In this section, we demonstrate the impact of REM-enabled situation awareness on channel quality and network performance with both link-level and network-level simulations. In all simulations, a number of secondary users (SUs) attempt to share the spectrum with some stationary incumbent PUs in an open area of 1000 meters by 1000 meters. The convergence time of the network is evaluated as the mobile SUs adapt to share spectrum with PUs.

4.1. Impact of REM information on stationary SU network adaptation time

The impact of minimizing stationary SUs' interference to PUs is investigated in this section. A densely populated area containing 20 PUs (40 links) and 30 SUs (60 links) is presented in Figure 3. All users are stationary, and occupy a single frequency channel and time slot. Multiple users located in the same radio resource set (frequency channel, time slot) cause interference to each other, but separate sets are orthogonal. In all simulations, all PU links are located on orthogonal sets, and therefore do not cause one another interference. However, there are not enough orthogonal sets for all links, thus many channels and time slots must be shared by SUs. PUs have static channels, but SUs may change their parameters at the risk of causing interference to both primary and other secondary users. For the simulation, each SU makes one of four simple (heuristic) adaptations:

increase power, decrease power, change frequency channel or time slot, or make no change.

In the first case, information about the radio environment is not known, and the SUs must make their adaptations based upon their links' received SINRs and the measured interference levels. In the second case, the SUs have additional information about all links, including the transmitter and receiver locations and the channel/time slot they currently occupy. Each radio, however, still acts independently of others, and therefore a global network optimum is not guaranteed in either case.

PU links were initially established to have a received power 10 dB above the noise floor, taking into account antenna gains and propagation losses. Note in Figure 4 that with global REM information, the SUs cause minimal interference to PUs (a SINR degradation of only 0.2 dB). Without REM, however, this degradation extends to nearly 2.5 dB on average, and in some cases more than 20 dB. Furthermore, the average SINR of SUs increases with REM knowledge, a full 1.2 dB than without REM (see Figure 4). This suggests that the SUs with REM information can simultaneously maintain PU link quality as well as their own. Additionally, as areas become more congested, these differences increase.

4.2. Impact of REM information on PU performance in the presence of mobile SUs

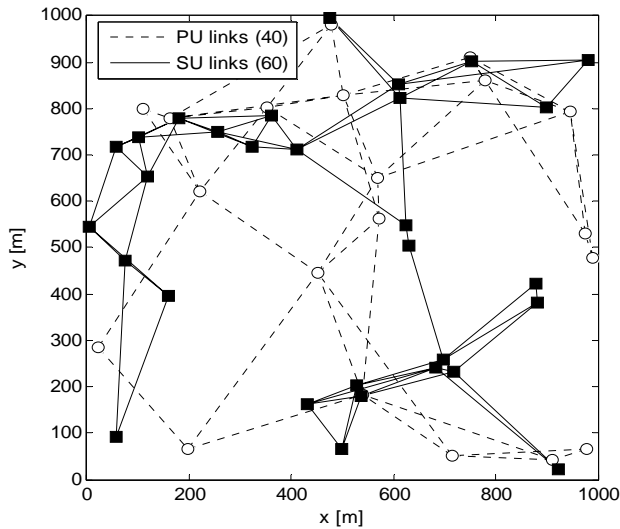


Figure 3: Simulation scenario (I)

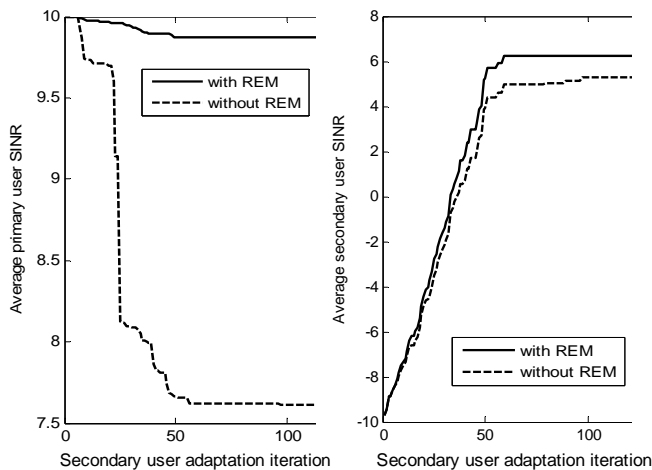


Figure 4: Average PU and SU SINR vs. SU adaptation time

In this subsection, all SUs are moving randomly within the simulation area. The simulation parameters are listed in Table 2. REM-enabled cognitive SUs adopt an adaptive transmission scheme: if the SU detects a PU is transmitting or falls within its interference range, it will suspend transmission. Figure 5 shows the average SINR improvement at the central PU node (node O in Figure 6) in the presence of 50 SUs. The SUs are moving randomly in the simulation area. When these SUs make adaptations with the help of the global REM or local REMs, the average SINR at the central PU receiver is increased by 24.3 dB and 14 dB, respectively. The results also indicate the benefits of hidden PU protection due to cooperative learning, which is enabled by disseminating local REMs among SU nodes [3]. Each SU node can obtain a global REM by integrating local REMs from distributed SU nodes.

The UM-OLSR protocol [16] and the NS-2 network simulator (version 2.29) [17] were used for network-level simulation on PUs' performance in the presence of SUs.

Table 2: Simulation parameters

Parameter	Value
Transmission range of radio node (PU or SU)	450 meters
Sensing range of SU	450 meters
Interference range of SU	450 meters
Speed of SUs	Uniformly distributed in (0, 10m/s)
Data rate of wireless link	2 Mbps
Interface queue length	50 packets
Radio channel model	two-ray ground model
Simulation period	200 seconds

Both PU and SU nodes comply with IEEE 802.11 MAC. The simulation parameters are also listed in Table 2.

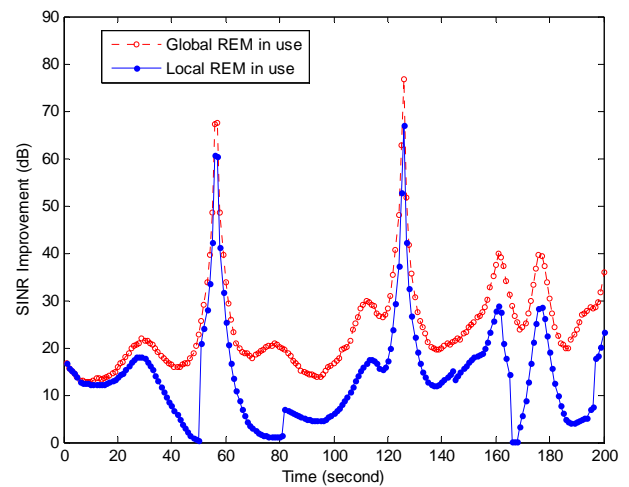


Figure 5: Simulated received SINR improvement at a PU node when using REM-enabled CRs as SUs

In the NS-2 simulations, two constant bit rate (CBR) connections are established between PU nodes A and D, and nodes B and C, respectively (see Figure 6), and the PUs' CBR traffic has fixed periodic pattern. Cognitive SUs can model PUs' spectrum usage pattern after an observation period and then transmit during the idle time to avoid collisions. Note that a coordinated quiet period for all SUs is required to detect PUs' spectrum usage pattern. Figure 7 shows the average delay of data flow between PUs under various scenarios. It is shown that REM-enabled CR SUs introduce little latency increase, whereas non-CR SUs may result in significant delay to PUs' packet deliveries due to frequent collisions. Note: in Figure 7, the 1st data flow is from node A to node D while the 2nd data flow is from node B to node C. For scenario #1, #2, #3, #4, PUs co-exist with 10, 20, 30, and 30 SUs, respectively. In scenario #3, SUs generate one 512-byte CBR packet per second, whereas in scenario #4, SUs generate 10 times higher CBR traffic (one 5120-byte CBR packet per second). Simulations show that the PUs have nearly the same throughput for these four scenarios. Therefore, for packet data communication networks, the packet delay of incumbent PUs is a more

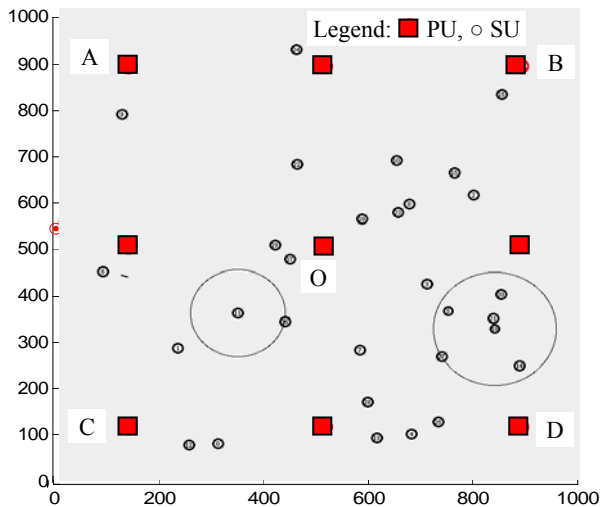


Figure 6: Simulation scenario (II)

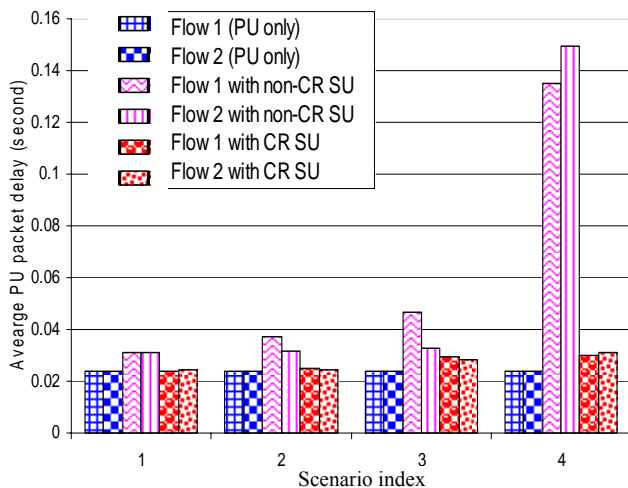


Figure 7: Simulated average packet delay of PUs under various scenarios

sensitive indicator of harmful interference from SUs.

5. SUMMARY

This paper introduces a new approach to developing CR based on REM. Ideally, REM can provide CRs global radio environment information. The system flow and framework of REM-enabled situation-aware learning algorithms have been discussed. Global situation awareness and coordination help CRs to make desired adaptations beyond single node's capability. Both link-level and network-level simulation results demonstrate that global REM information can significantly improve the performance of both primary and secondary users, reduce CR network adaptation time, and mitigate the hidden node problem.

ACKNOWLEDGMENTS

Youping Zhao and Joseph Gaeddert have been supported in part by the Army Research Office (ARO) and the

Electronics and Telecommunications Research Institute (ETRI). Any opinions, findings, and conclusions or recommendations expressed in this paper are those of the author(s) and do not necessarily reflect the views of ARO or ETRI. Youping Zhao would like to thank David Raymond for his great help in NS-2 simulations. Thanks also to Lizdabel Morales, Jody Neel, Kyouwoong Kim, Rekha Menon, Shiwen Mao, and Jungsun Um for their helpful discussions.

REFERENCES

- [1] Mitola, J., III; Maguire, G.Q., Jr.; "Cognitive radio: making software radios more personal", IEEE Personal Communications, Vol. 6, Issue 4, Aug. 1999.
- [2] Y. Zhao, B. Le, J. H. Reed, "Network Support – The Radio Environment Map", *Cognitive Radio Technology*, B. Fette, ed., Elsevier, 2006.
- [3] Y. Zhao, J. H. Reed, S. Mao, and K. K. Bae, "Overhead analysis for REM-enabled CR Networks", in proceedings of the first IEEE Workshop on Networking Technologies for Software Defined Radio Networks, Sept., 2006.
- [4] William Krenik and Anuj Batra, "Cognitive Radio Techniques for Wide Area Networks," 42nd Design Automation Conference, Anaheim, CA, June 13–17, 2005.
- [5] B. Krenik and C. Panasiak, "The Potential for Unlicensed Wide Area Networks", Wireless Advanced Architectures Group, Texas Instruments White Paper, October 2004.
- [6] C. R. Aguayo Gonzales, et al, "Design and Implementation of an Open-Source Software-Defined Cognitive Radio Testbed", submitted to IEEE Journal on Selected Areas of Communication (J-SAC).
- [7] T. Rondeau, C. Rieser, B. Le, and C. Bostian, "Cognitive radios with genetic algorithms: Intelligent control of software defined radios", SDR Forum Conference 2004.
- [8] T. Clancy, J. Hecker, E. Stuntebeck, T. O'Shea. "Applications of Machine Learning to Cognitive Radio Networks," in submission to IEEE Wireless Communications.
- [9] J. Gaeddert, K. Kim, R. Menon, L. Morales, Y. Zhao, K. K. Bae, and J. H. Reed "Applying artificial intelligence to the development of a cognitive radio engine", MPRG Technical Report, June 30, 2006.
- [10] SOAR: <http://sitemaker.umich.edu/soar>
- [11] Y. Zhao and J. H. Reed, "Radio Environment Map-enabled Cognitive Radios", 2006 MPRG Wireless Personal Communications Symposium, Blacksburg, VA, June, 2006.
- [12] P. Marshall, S. Griggs, DARPA Wireless Networking Vision (DWNV) "Making Network Centric Accessible for the Warfighter", WANN BAA 06-26, Proposers' day presentation, Mar 16, 2006. <http://www.darpa.mil/ato/solicit/WANN/WANN.pdf>
- [13] Y. Zhao, et al, "Design and exploitation of Radio Environment Map (REM) for 802.22 WRAN Systems", in preparation.
- [14] S. M. Key, *Fundamentals of Statistical Signal Processing: Detection Theory*, Prentice Hall PTR, 1998.
- [15] T. Clancy, B. Walker. "Predictive Dynamic Spectrum Access," to appear at SDR Forum Technical Conference (SDR 2006), Nov., 2006.
- [16] <http://masimum.dif.um.es/?Software:UM-OLSR>
- [17] The Network Simulator ns-2. [online] Available: <http://www.isi.edu/nsnam/ns/>